



**Leader** in the field  
of machine relocation





## **Experts** in machine relocation

MS Industry provides comprehensive services involving assembly, disassembly relocation and installation of production stations in industrial plants. We deliver innovative technical solutions that enable efficient and safe transport of machinery and whole machine parks.

We didn't start yesterday. Each of us – the people who create MS Industry – has several years of experience in relocation of production plants. It was our strong specialisation in this area that has led us to join forces under one brand.

We have worked for companies such as Bosch, Coca-Cola, Samsung, LG, Caterpillar, Magna, BMW, Volkswagen or German Opel plants. We have carried out ambitious projects together with large global concerns. Today, we have both single orders and multi-stage cooperations under our belt, as well as awards and numerous credentials.

**With boldness and commitment, we are setting new directions in the area of industrial services. If your business needs someone like us – we will do our best.**

# ***Offer***



**RELOCATION**  
OF PRODUCTION PLANTS



**ASSEMBLY AND DISASSEMBLY**  
OF MACHINERY



**RELOCATION**  
OF ASSEMBLY LINES



**INDUSTRIAL**  
INSTALLATIONS



**ROBOTISATION**  
OF WORKSTATIONS



**INDUSTRIAL**  
AUTOMATION



**INDUSTRIAL**  
PACKAGING





## PICK AND CARRY CRANE

### **JMG MC 580 I**

**Intended use:** a remote-controlled, professional pick and carry crane with a load capacity of 58 t

**Load capacity:** 58 tons

**Weight:** 39 tons

**Height:** 2 479 mm

**Width:** 2 350 mm

**Length:** 5 295 mm

**Power supply method:** electrical (operated via a remote controller)

**Boom length:** 12 m



## PICK AND CARRY CRANE

### **JMG MC 580 II**

**Intended use:** a remote-controlled, professional pick and carry crane with a load capacity of 58 t

**Load capacity:** 58 tons

**Weight:** 39 tons

**Height:** 2 479 mm

**Width:** 2 350 mm

**Length:** 5 295 mm

**Power supply method:** electrical (operated via a remote controller)

**Boom length:** 12 m





## PICK AND CARRY CRANE

### **JMG MC 580 III**

**Intended use:** a remote-controlled, professional pick and carry crane with a load capacity of 58 t

**Load capacity:** 58 tons

**Weight:** 39 tons

**Height:** 2 479 mm

**Width:** 2 350 mm

**Length:** 5 295 mm

**Power supply method:** electrical (operated via a remote controller)

**Boom length:** 12 m

## MOBILE DEVICE

### **JMG MC 250 FL**

**Intended use:** a mobile device for transporting loads up to 25 t

**Load capacity:** 25 tons

**Weight:** 25 tons

**Height:** 2 750 mm

**Width:** 1 800 mm

**Height of the fully extended boom:** 7 900 mm

**Length of forks:** 2 500 mm

**Height lifting:** 2 500 mm

**Power supply method:** electrical (operated via a remote controller)





## HYDRAULIC GANTRY **ENERPAC SL 400**

**Intended use:** moving loads of up to 400 t  
in limited working spaces

**Load capacity:** 400 tons

**Weight:** four hydraulic blocks of 4 600 kg each

**Height:** min. 3 200 mm, max. 9 450 mm

**Power supply method:** electric

**Load capacity parameters:** variable

## HYDRAULIC GANTRY **ENERPAC SBL 1100**

**Intended use:** moving loads of up to 1100 t  
in limited working spaces

**Load capacity:** 1 100 tons

**Weight:** four hydraulic blocks of 12 000 kg each

**Height:** min. 4 370 mm, max. 12 500 mm

**Power supply method:** electric

**Load capacity parameters:** variable





## MOBILE DEVICE **HOIST FR 40/60 I**

**Intended use:** a mobile device for transporting loads up to 27 t

**Load capacity:** 27 tons

**Weight:** 26 tons

**Height:** 2 700 mm

**Width:** 1 900 mm

**Height of the fully extended boom:** 7 900 mm

**Length of forks:** 2 400 mm

**Power supply method:** gas

## PICK AND CARRY CRANE **ORMIG 55 TM**

**Intended use:** transport of loads up to 60 tons in narrow and low industrial halls

**Load capacity:** 60 tons

**Height:** 3 000 mm

**Width:** 2 740 mm

**Length:** 6 245 mm

**Boom length:** 15 m

**Power supply method:** oil

**Accessories:** 2 mechanical jibs





## MOBILE DEVICE

### **HOIST FR 40/60 II**

**Intended use:** a mobile device for transporting loads up to 27 t

**Load capacity:** 27 tons

**Weight:** 26 tons

**Height:** 2 700 mm

**Width:** 1 900 mm

**Height of the fully extended boom:** 7 900 mm

**Length of forks:** 2 400 mm

**Power supply method:** gas



## FORKLIFT

### **RANIERO AC120**

**Load capacity:** 12 tons

**Weight:** 19 tons

**Height:** 2 190 mm

**Width:** 2 095 mm

**Length:** 6 540 mm

**Length of forks:** 2 400 mm

**Height lifting:** 2 920 mm

**Power supply method:** electrical  
(operated via a remote controller)



## FORKLIFT

### **HYSTER**

**Load capacity:** 7 tons

**Height:** 2 720 mm

**Width:** 1 420 mm

**Length:** 4 870 mm

**Length of forks:** 1 820 mm



## FORKLIFT

### **RMF**

**Load capacity:** 8 tons

**Height:** 2 450 mm

**Width:** 1 460 mm

**Length:** 3 180 mm

**Power supply method:** gas

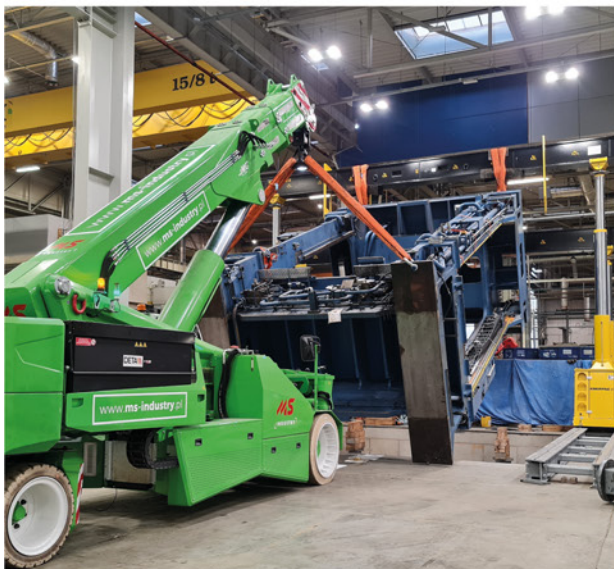
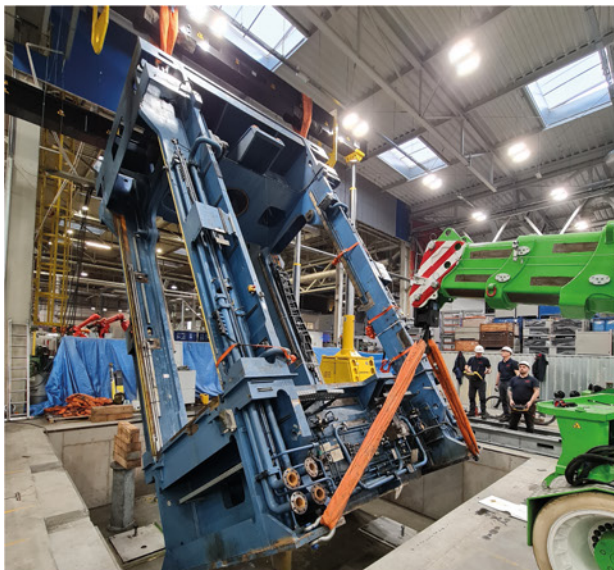


The background is a grayscale photograph of an industrial facility, likely a power plant or manufacturing plant. It features large vertical structures, pipes, and machinery. A prominent diagonal line splits the image from the top-left to the bottom-right. The upper-left portion of the image is semi-transparent, while the lower-right portion is solid black. The word "REALIZATIONS" is written in a bold, red, italicized sans-serif font across the center, overlapping the diagonal boundary. In the background, various industrial components are visible, including a large white cabinet with "SUS" written vertically, and several smaller units with "ENERPAC" and "MS INDUSTRY" logos. The number "4" is also visible on a vertical pipe.

# ***REALIZATIONS***



## INSTALLATION OF THE SCHULER PRESS IN POLMOTORS PLANTS





## RELOCATION OF THE ARISA PRESS

---



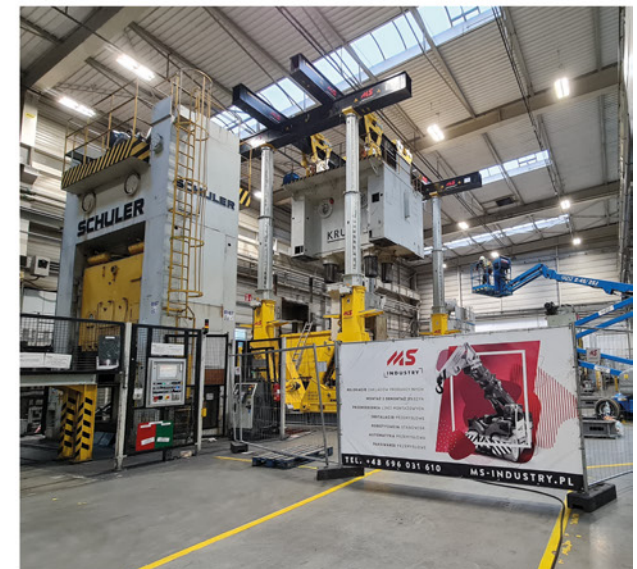


## IMPLEMENTATION AT THE VELVET CARE SP. Z O.O. FACILITY



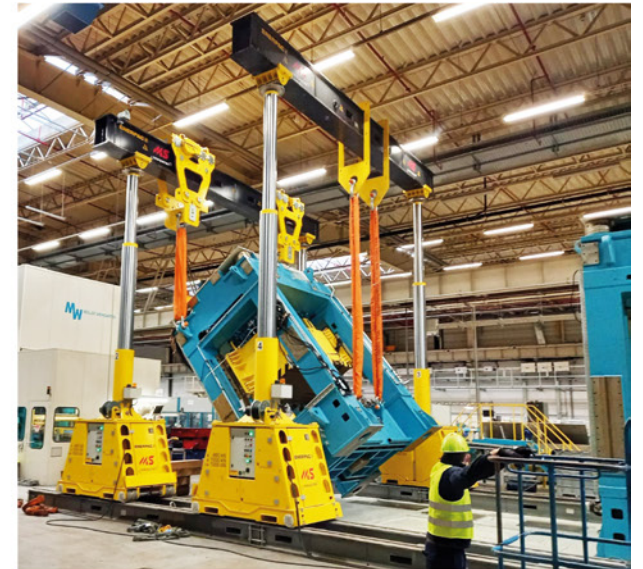


## ASSEMBLY AND DISASSEMBLY OF THE KRUPP PRESS





## ASSEMBLY OF THE PRESS AT BSH GROUP





## DISASSEMBLY AND LOADING OF THE SCHULER PRESS IN GERMANY

---





## ASSEMBLY OF THE PRESS ELEMENTS WEIGHTING 11 TONS USING THE HOIST FR 40/60 DEVICE





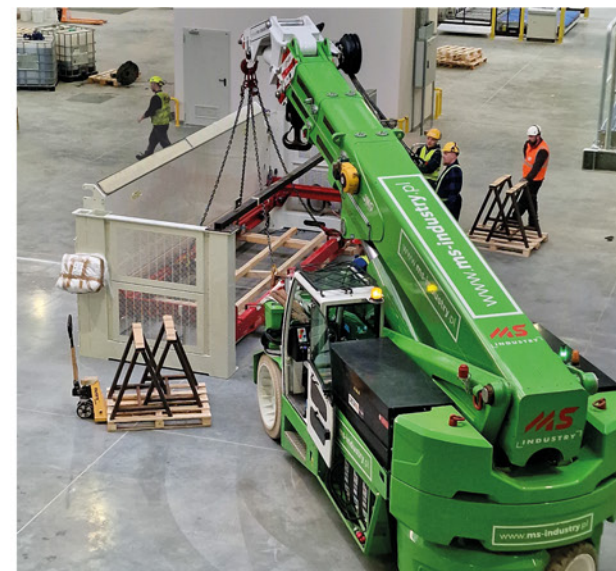
## INSTALLATION OF THE NEW LAEIS 2500 PRESS

---





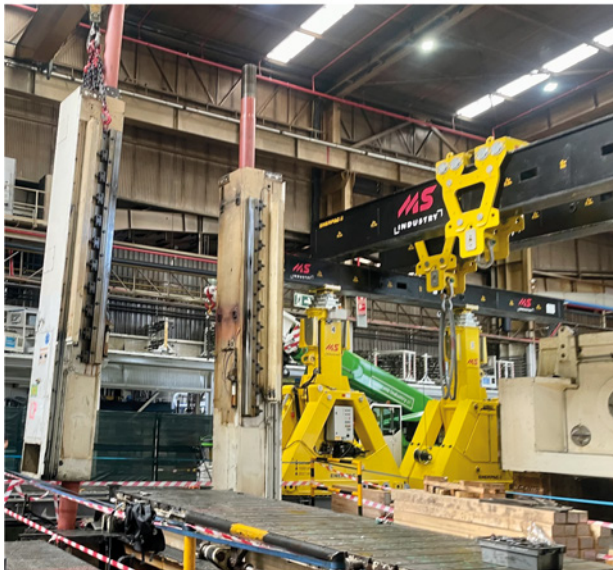
## UNLOADING AND ASSEMBLY OF THE CORRUGATOR





## DISASSEMBLY OF THE FAGOR 2000 TONS PRESS

---





## INSTALLATION OF THE NEW FAGOR HYDRAULIC PRESS WITH A PRESSURE LEVEL OF 1600 TONS





## INSTALLATION OF AN ERFURT PRESS CROWN WITH A PRESSURE LEVEL OF 800 TONS

---





## UNLOADING AND ASSEMBLY OF THE BOBST MASTERCUT MACHINE





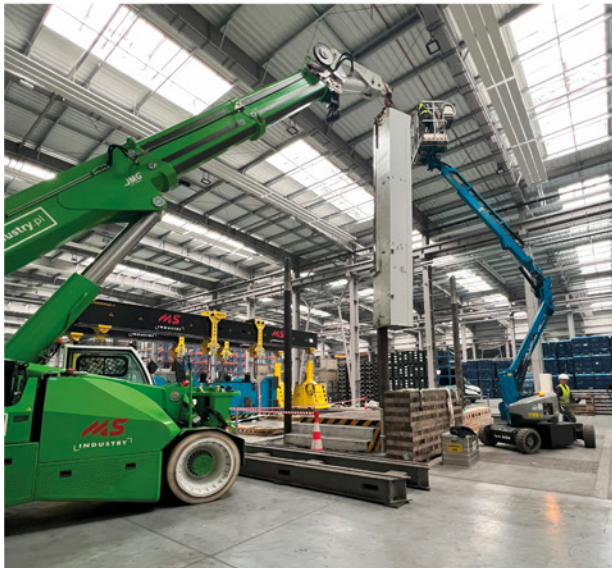
## DISASSEMBLY AND LOADING OF THE ROVETTA PRESS

---





## ASSEMBLY OF THE PRESS USING AN HYDRAULIC GANTRY SL400





DISASSEMBLY AND LOADING OF A SCHULER PRESS WEIGHING 80 TONS



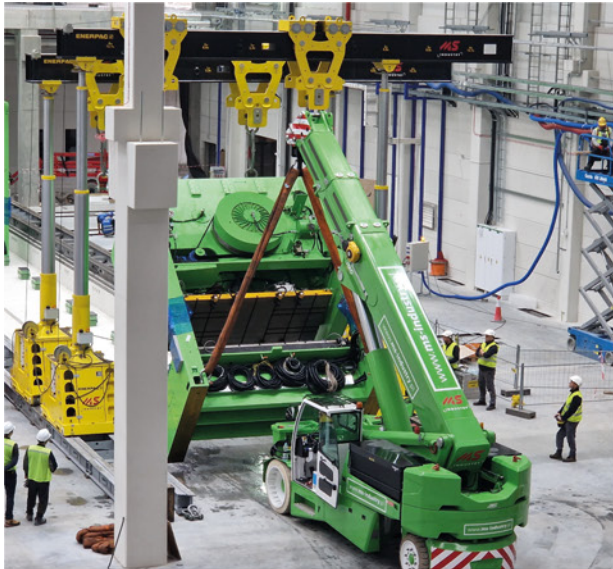


## UNLOADING, PLUMBING, FOUNDATION, 6 PRESSES WEIGHING 75 TONS





## UNLOADING, PLUMBING, FOUNDATION, 6 PRESSES WEIGHING 75 TONS







**MS INDUSTRY Sp. z o.o.**

ul. Piekarska 130  
43-300 Bielsko-Biała  
biuro@ms-industry.pl  
NIP: 937 273 27 96

---

**TOMASZ STOLARSKI**

Commercial Director  
tel. +48 696 031 610  
tomasz@ms-industry.pl

**TOMASZ ZALEWSKI**

Regional Manager  
tel. +48 731 600 720  
tomasz.z@ms-industry.pl